



# GlueFusion™ ATM

**Irreversible cash degradation inside the ATM cassette**

Insolubly glues all banknotes together upon activation

Cash inside the cassette becomes worthless

Easy integration with other ATM security sensors or systems

User friendly and safe

Low TCO

GlueFusion turns individual  
banknotes into one solid brick

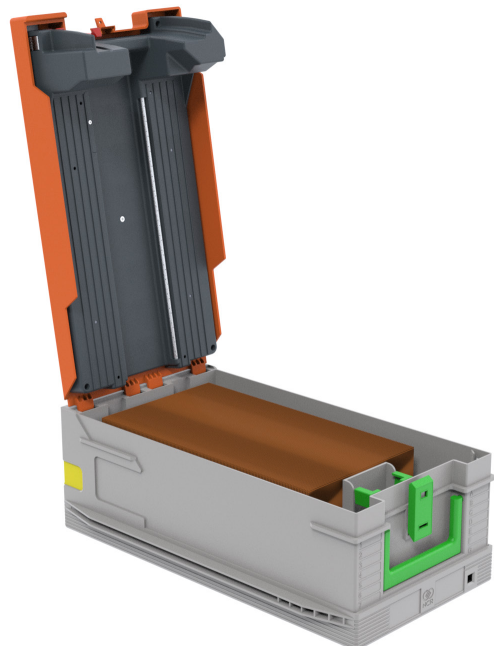


# Why GlueFusion?

**ATMs are attacked almost daily, resulting in massive damage. As time passes by, we see criminals using increasingly heavier tools; forcing banks to implement far-reaching and radical countermeasures. The arms race between banks and criminals using explosive attacks is in full effect. This arms race can only be broken by taking away the potential reward, by irreversibly degrading the cash in case of any attack.**

## Irreversible degradation

This philosophy led Mactwin to develop GlueFusion; an ATM cash cassette with a built-in module for degradation by glue. Upon activation, GlueFusion glues all individual banknotes together in the blink of an eye, leaving nothing but a worthless, solid brick of paper. If anyone tries to peel off a single banknote, it will immediately tear into small pieces. The applied glue cannot be dissolved or removed in any other way. Whereas criminals are usually quite successful in finding ways to spend (or launder) ink-smudged banknotes, this will be impossible with glued or torn banknotes. The cash is completely worthless, because nobody will accept a brick of paper or mere shreds as payment. Nor will they fit into automated payment terminals.



# What makes GlueFusion unique?

**Mactwin has developed GlueFusion in close cooperation with commercial banks, CIT companies, police and the Dutch Central Bank. The following features make GlueFusion unique and effective:**

## **Reliable**

GlueFusion always works; against any type of attack and regardless of the magnitude of an explosion. In addition, the unauthorised removal or opening of the cash cassette will also lead to immediate activation, glueing the banknotes together.

## **User friendly and safe**

GlueFusion is easily installed in any current ATM and is easy to use. The chance of user error is minimal and false activations are near impossible, regardless whether you are replenishing or swapping cassettes. GlueFusion has been declared safe to use by CIT companies, banking industry HSE managers and independent occupational health and safety agency Arbode Consultancy.

## **Easy integration**

GlueFusion can be easily integrated with other (third party) sensors or systems in and around the ATM.

## **Low TCO**

GlueFusion requires minimal maintenance, which can be performed remotely, reducing costs and increasing ATM availability.

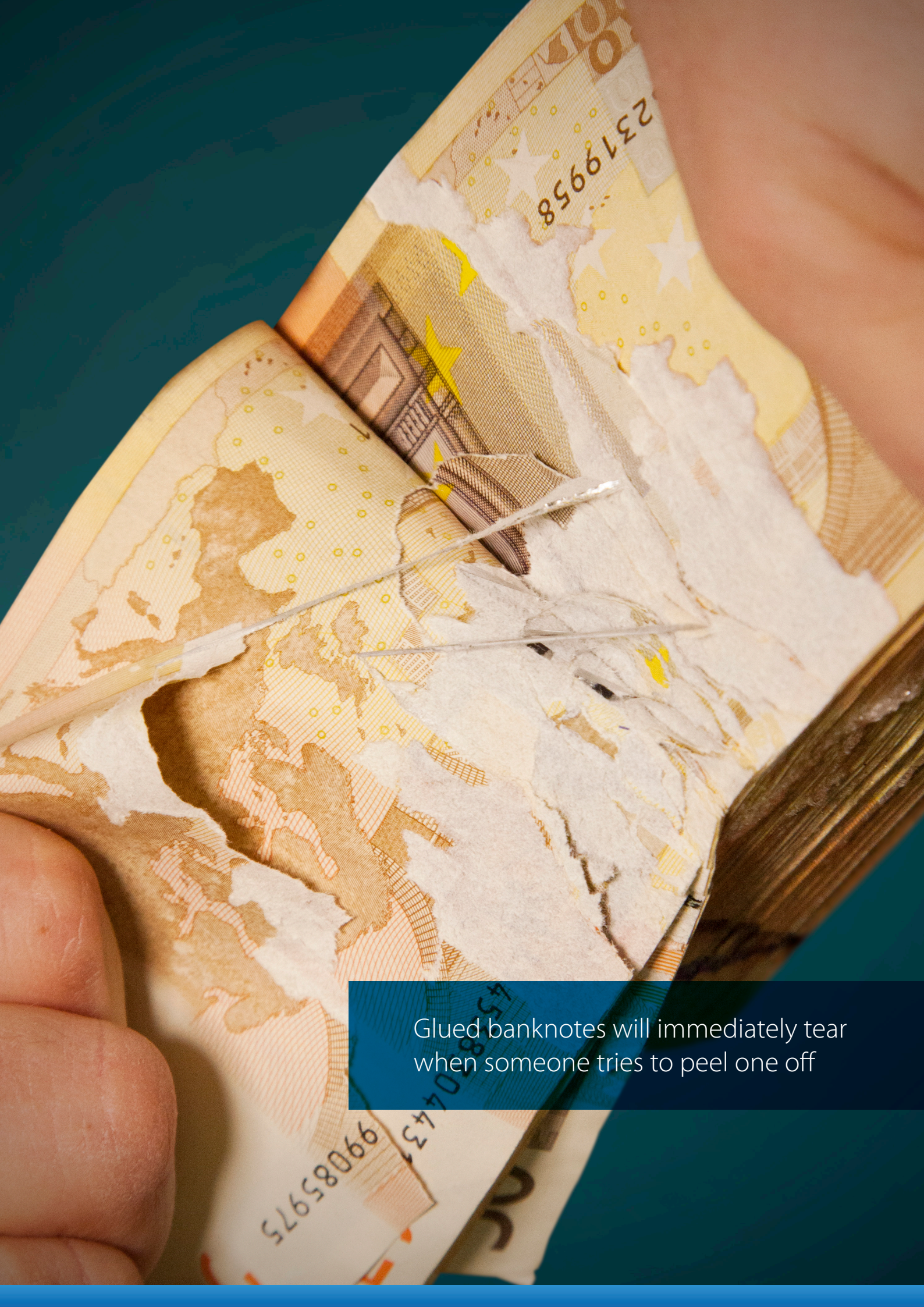
## **Reimbursement by central bank**

Banks and authorised CIT companies can return glued banknotes to the central bank, for reimbursement.

# Operation and integration

GlueFusion does not impose any requirements on other security measures and fits seamlessly in the banks' focused approach to stop attacks on ATMs. As a stand-alone solution, GlueFusion is triggered by sensors inside the cash cassette. Unauthorised removal or opening of the cassette will lead to immediate activation, gluing the banknotes together.

If you combine GlueFusion with early warning sensors, quick response, crisp CCTV footage and DNA markers, you will significantly increase the chances of apprehending the criminal. The crime will be recorded, giving you information on the criminal and their Modus Operandi. This will make investigation, apprehension and prosecution of the criminal so much easier. Combined with e.g. shutter detection and gas sensors, you will be able to limit or even prevent damage from an explosive attack.



Glued banknotes will immediately tear when someone tries to peel one off



## Powered by Mactwin

### **GlueFusion is a solution by Mactwin Security.**

Mactwin Security offers solutions that prevent disruption of core business processes. Enabling our customers to maintain focus on what they aspire to achieve. We minimise risks and continuously strive to outsmart criminals. Our solutions are always user friendly, future proof and cost efficient.

Other cash security solutions by Mactwin:

- GPU (Gas Protection Unit): fast detection and neutralisation of an ATM gas attack
- MactwinBox: cashbox and pavement protection system for CIT companies
- Gatekeeper: single person access control system for small spaces, like CIT vehicles



A massive brick of banknotes or mere shreds will never be accepted as payment



# The Cash Security Innovators

P v M Gelderland Oranje 12 | P.O. Box 44 | 6666 ZH Heteren | The Netherlands  
T +31 (0) 26 479 22 55 | W [www.mactwincashsecurity.com](http://www.mactwincashsecurity.com)